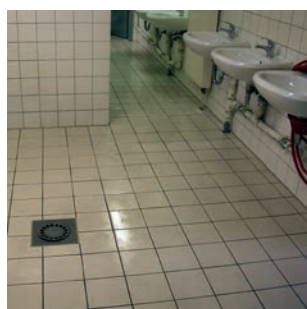
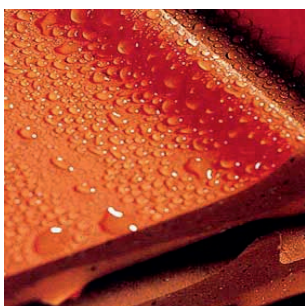
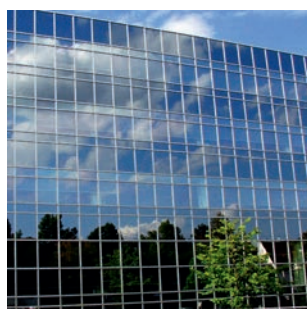


A choice of products from ILKA,
so that it's the right chemistry!



Quality pays off

Ask for further products. With approx. 70 tried and tested cleaning products we offer solutions for even the toughest cases.



Post address/Invoice address/Administration

**ILKA Chemie GmbH
Danziger Str. 21
74613 Öhringen
Germany**

E-mail: post@ilka-chemie.com
Web: www.ilka-chemie.com

Contents	Page
Planofix for use in the industrial, catering, automobile and building sectors	2
Sanitary cleaner	10
Wash hall cleaners	11
Aluminium facades	12
Colour for roofing tiles	15
Sanitising solution	15
Swimming hall and tile cleaner	15
Stone cleaning	16
Siloxan weather protection	18
Top Glanz floor coating	19
Strukturfix impregnating agent	19
Anti-graffiti emulsion	19
Paint stripping with Rapid Bio II + III	20
Adhesive tape and paint removal with Rapid	22
Mould killer	26
Industriefix	27
TR 79 degreasing and cleaning concentrate	27
Glass cleaner	27
Accessories and package sizes	28

ILKA - PLANOFIX

Water-soluble degreasing product with outstanding depth effect (biodegradable, with antistatic additive). A product that cleans, protects, and helps to maintain value.

Application range:

This highly efficient cleaning concentrate removes fat, grease, oil, wax, coal, petrol, diesel, soot, ink and other tenacious contaminations as may occur in industry, the catering sector, food production, the automobile industry, trade and handicraft. ILKA PLANOFIX can be used for instance as machine cleaner, kitchen cleaner (food grade approved by Institut Fresenius), grill cleaner, motor cleaner, basic cleaner, routine cleaner, awning and cover cleaner, plastic cleaner, and caustic lye. Available also in fat-replenishing and scented quality.

Contact time:

Normally dirt dissolves after few moments, for thick deposits the required contact time will be between 5 and 15 minutes.

Use:

ILKA PLANOFIX can be diluted in water 1:1 to 1:50 (1:10 to 1:200 when used in cleaning machines), and at dilutions as determined by testing. Mechanical removal will normally not be necessary. ILKA PLANOFIX can be used as a substitute for tetrachloroethylene (Per) or trichloroethylene (Tri). For use as dip, in bucket and with brush, with single-disk machines, cleaning machines and spraying equipment.



Once sprayed on, PLANOFIX rapidly dissolves heavy oil contamination.

Iron girder



Sheet metal covering



Sony building, Tokyo

Properties:

ILKA PLANOFIX is a highly efficient concentrate with emulsion effect, biodegradable and **conforms to section 9 of the German Detergents and Cleaning Agents Act.**

The product is soluble in water and, generally can be used at dilutions between 1:1 and 1:300.

The cleaning agent is non-toxic, has no unpleasant odour, and is non corrosive, flameproof and biodegradable. (After spillage, rinse abundantly with water and drain to the sewage system).

Planofix does **NOT** contain the following substances:



Silicones
Siloxanes
Amines
Polymers
Colourants
Heavy metals
Organic solvents
Hazardous substances according to Risk phrases
Plastic additives
Plasticisers
Halogens
Pigments

Advantages:

Economical, as it can be used at a high degree of dilution, no heat required, acts **rapidly** and is **safe**, with an **outstanding depth effect** without solvent additive. **Very broad range of applications, suitability for most surfaces.**

Removes for instance fat, grease, soot, tar containing substances, and similar contamination.

Approvals:

The use of Planofix is approved for instance at **DaimlerChrysler, BMW, VW, German Railways** and many other big companies. It may also be used in the **food industry**.



Industrial use: Grip marks on doors



After a short contact time, Planofix will remove even heavy oil fowling.

Industrial use: Tool cleaning



Industrial use: Vestibule



Industrial use: Machine



Industrial use: Workbench



Facade: Marquee



Industrial use: Machine



Industrial use: Toilets



Print shop: Print rollers



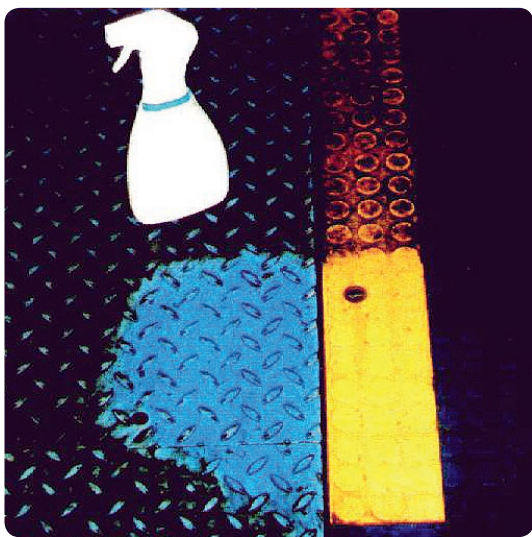
Aluminium window frame



Print shop: Wall



Kitchen: Steamer



Print shop: Floor



Kitchen: Grill pan



Granular industrial floor



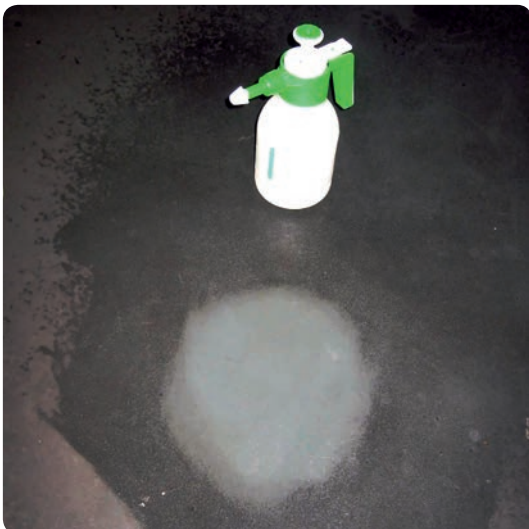
Stone tiles walking zone



Finestone tiles



Polished artificial stone



PVC flooring



Limestone tiles



Industrial use: Forklift traces



Oil fowling



Industrial use: PVC flooring



Oiled conduits



Floor marking



Forklift cleaning



- Floors, stone, tiles

Stone floors
PVC flooring
Coated floors
Removal of forklift traces
Finestone tiles
Wood floors
Corrugated sheet metal
Granite
Marble
Tiles

- Tarpaulins

Tents
Freight carrying vehicles
Marquees

- Walls, ceilings, windows

Wallpapers (washable)
Aluminium sheeting
Exhaust hoods
Window framings
Wood panelling
Toilet walls
Sound insulation ceilings

- Machines

Metal sheeting
Tools
Motors
Conveyor belts
Plastic sheeting
Plexiglas® /Perspex® dividers

- Plastics

Light switches and wall outlet sockets (interrupt mains power before starting!)
PC housings
Panelling
Lockers
Garden furniture
Resopal® /Formica®

- Wood

Workbenches
Saunas
Furniture

- Textile surfaces

Wall-to-wall carpets

ILKA - Sanitary cleaner

Acts as a disinfectant
no hydrochloric acid contained

Properties:

ILKA sanitary cleaner **removes all kinds of dirt:**

- Fat, lime scale deposits
- Urine scale and hard-water deposits
- Rust and soap residue

on floors, walls, tiles and glass, in swimming pools, shower rooms and sanitary installations. Makes taps squeaky clean.

Use:

1 litre of ILKA sanitary cleaner per 10 litres of water. Apply solution and allow dwelling, then wash away with water. Brushing with scrubber or cleaning machine will increase the effect. To remove stubborn residues, apply concentrated as a spray from a dash bottle. Wash with plenty of water.

Does not harm porcelain enamel bathtubs. Do not use on acid-sensitive stone, such as polished marble or travertine.



Dirty tiles



Water tap before / after



Wash basin

Wash hall cleaner



ILKA wash hall cleaner

Cleaning concentrate for wash halls

Application range:

ILKA wash hall cleaner is a cleaning concentrate with excellent cleaning power that cleans and **removes soiling, such as lime, oil, grease, rust, wax, moss and algae from tiles and concrete.**

ILKA wash hall cleaner should be used on acid-resistant tiles only!

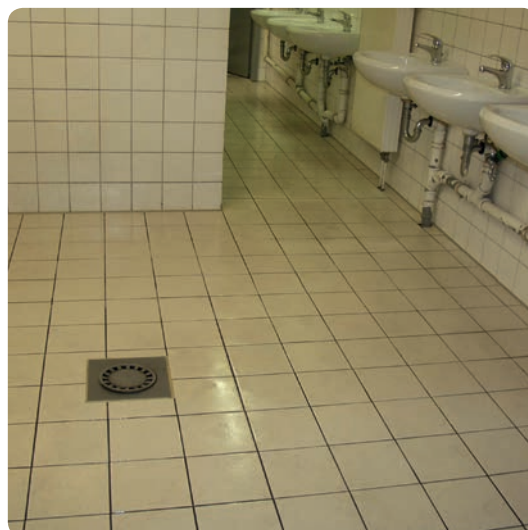
Use:

Thoroughly pre-wet the surface to be treated. Apply ILKA wash hall cleaner with scrubber or spraying equipment. Contact time will depend on the degree of contamination and should be determined by testing. Scrub and wash away with cold water. The use of a high-pressure washer will eliminate the need for scrubbing. Metal parts should be covered.

Tested and approved for oil separators. Can be diluted in water depending on the degree of contamination.



Before treatment



After treatment

The floor in these halls was extremely open-pored so that heavy soiling reoccurred soon after cleaning.

Remedy:

Thorough basic cleaning with wash hall cleaner followed by impregnation with ILKA Strukturfix. The floor can now be held tidy very easily.



Wash hall cleaning



Lime scale deposits

ILKA – Alu - Rein S

Special cleaner
for aluminium surfaces

Properties:

ILKA Alu-Rein S easily removes heaviest contamination on aluminium facades caused by the influence of weather. **Removes grease, dirt as well as lime, rust and oxidation from aluminium, stainless steel, chrome-plated materials, plastics, tiles and stoneware.** Not suitable for bronzed anodised surfaces.

Use:

Thoroughly pre-wet the surface to be treated. Depending on the degree of contamination, apply Alu-Rein S pure or diluted up to 1:20. After a short contact time, work in with a pad (green or red) to increase the cleaning effect. Wash off thoroughly with water. High-pressure cleaners are suitable for application and washing as well. Avoid direct sunlight and exposure to direct wind direction while cleaning. ILKA Alu Rein S should not be used at temperatures below 5° C. It is recommended to perform a test on a test patch prior to cleaning. Conservation with ILKA Alu-Fix will give the facade a consistent look and form a protective film providing a barrier against aggressive pollutants and contamination.



Aluminium window sill



Interior window sill



Aluminium window

ILKA – Alu - Rein M

Special cleaner for anodised, aluminium and powder-coated facades

Properties:

For cleaning anodised surfaces and aluminium alloys on buildings. Especially suitable for removal of contaminations containing grease and oil. ILKA Alu-Rein M is tested for cleaning anodised and coated metal facades and **approved by the Quality Association for the Cleaning of Metal Facades in Germany.**

Use:

Depending on the degree of contamination, the cleaner can be applied either diluted in water or undiluted. Apply ILKA Alu Rein M and allow to act for a short time (approx. 4 minutes). Work in with cloth or soft pad (white) to improve the cleaning effect. Thoroughly wash away with water. High-pressure cleaners are also suitable for application and washing. Avoid direct sunlight and exposure to direct wind direction while cleaning. ILKA Alu Rein M should not be used at temperatures below 5° C. It is recommended to perform a test on a test patch prior to cleaning. Conservation with ILKA Alu-Fix will give the facade a consistent look and form a protective film providing a barrier against aggressive pollutants and contamination.



Powder coating



Aluminium blinds



Window frame

ILKA - Alu - Fix

Preservative agent with cleaning power for anodised, aluminium and powder-coated facades

Properties:

ILKA Alu-Fix is a combination of a preservative agent and cleaning substances incorporated in special solvents. ILKA Alu-Fix reliably removes contamination caused by the influence of weather on anodised and coated metal facades for a long period of time. ILKA Alu-Fix is tested for cleaning anodised and coated metal facades and **approved by the Quality Association for the Cleaning of Metal Facades in Germany.**

Use:

ILKA Alu-Fix for cleaning

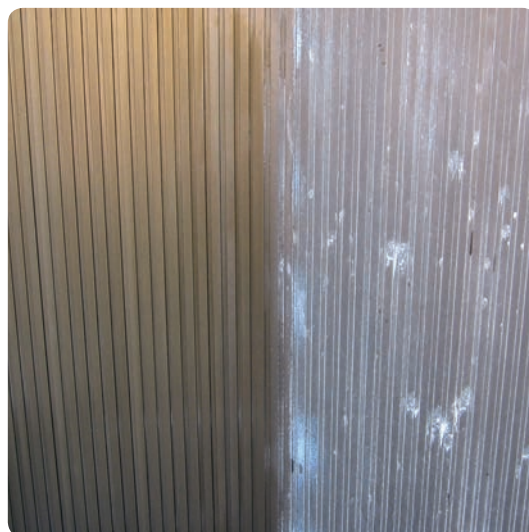
is applied pure and should not be diluted in water. The surface should be dry for treatment. After a short contact time, work in with a cloth or white pad to enhance the cleaning effect. Finally wipe with a cloth.

ILKA Alu-Fix for conservation

The surface should be dry for treatment. Avoid direct sunlight and exposure to direct wind direction while cleaning. Apply product with a spray gun, cloth or brush. Allow to dry for a short time (approx. 5 -10 minutes), then polish the surface by means of a cloth, pad, or use a polishing machine. The surface should be protected against rain for one day. It is recommended to perform a test on a test patch prior to cleaning. The temperature should be above 5° C;



Gewandhaus Leipzig



Left = after treatment



Powder coating

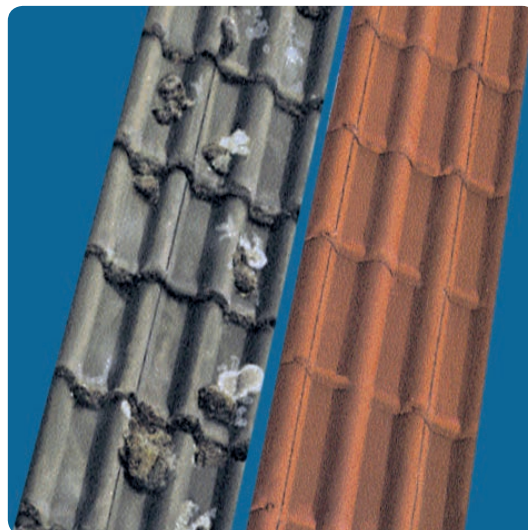
The paint film surface affected by chalking due to weathering will look like new after treatment with Alu-Fix.

Various applications



ILKA Color roofing tile colour

Protective coating with a matte finish for new roofs and cleaned old ones with algicidal and fungicidal effect. Elastic but free of plasticisers, resistant against dirt and chalking. Outstanding water and alkali resistance, resistant against UV, environmental influences and industrial atmosphere. High coverage rate and therefore very economical. Despite good water vapour permeability tight against rain and snow.



Protection with colour deepening effect

ILKA sanitising solution

Kills fungi, algae and mould. Acts immediately with a visible effect. For outside facades and interior walls (in well ventilated areas). Apply undiluted with a scrubber or brush, or use spraying equipment for application to the infested surfaces. After 1 to 2 hours, the visible (deadened) infestation can be removed easily with a scrubber or a high pressure cleaner. After that apply ILKA-“Sanierschutz“ for protection.



Sanitising solution

ILKA – HB

Cleaning concentrate, **free of hydrochloric acid**, for swimming halls and tiles. Easily removes fat and dirt deposits as well as lime, rust and hard water depositions from tiles, stoneware, enamel, chrome, plastics, stainless steel and varnished surfaces. Ideal for cleaning surfaces with grease deposits in hospitals, sanatoria, industrial areas, dairies, slaughterhouses as well as in swimming halls and swimming pools.



Removal of algae

ILKA stone cleaner S

Tested and approved cleaning concentrate for natural stone and brick facades

ILKA stone cleaner FSV 5

Cleaning concentrate for sandstone and brick facades. Extra strong with inorganic hydrogen fluoride to remove heaviest dirt deposits.

Application range:

ILKA stone cleaner is the ideal cleaning agent to remove organic and inorganic residue from any kind of acid-proof natural and artificial stone. The cleaning agent is suitable for cleaning silicate-bound natural stone, granite, sandstone and similar materials, and for fired stoneware, such as facing bricks, ceramic tiles, and bricks. ILKA stone cleaner should not be used on glazed, polished or ground stone surfaces, nor should it be applied with high-pressure cleaners!

ILKA stone cleaners are used for decades for heritage buildings. These gentle cleaners, when used correctly, do not roughen the surface.

Use:

Pre-wet the surfaces thoroughly with water until saturated. Apply ILKA stone cleaner S pure or diluted in water with a brush. After a short contact time of approx. 10 - 15 minutes (prior testing on test patch recommended) and wash off with cold water using a brush, strong jet of water, or high pressure cleaner (80-130 bars). Cleaning should be carried out on small sections of the surfaces at a time.

Anodised parts, aluminium, zinc, copper and glass, varnished surfaces, marble and glazed, polished stone have to be covered before using ILKA stone cleaner S. Cleaning should be carried out from the top to the bottom of the facade, and from the bottom to the top at each scaffold level.

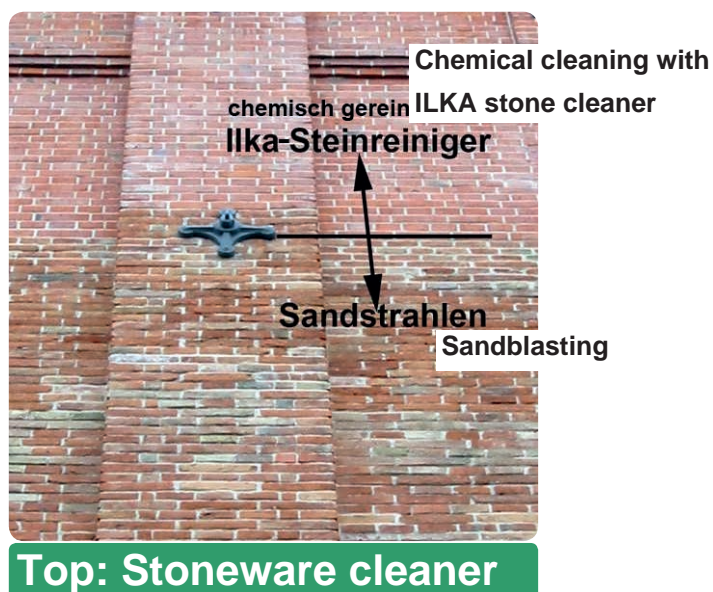
Lower areas of the facade should strictly be kept sufficiently wet.

Right:

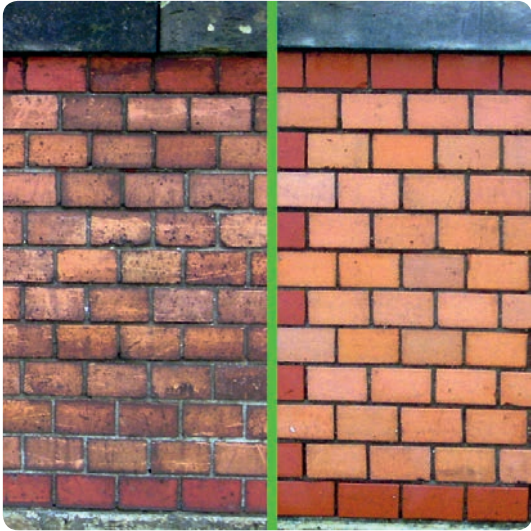
Comparison between sandblasting and chemical stone cleaning.

The photo was taken approx. 3 years after the treatment.

The surface in the area that underwent sandblasting is a great deal rougher and therefore much more susceptible to decomposition by atmospheric and biological influence



Stone cleaner S and FSV 5



Right: Stone cleaner S



Stone cleaner FSV 5



Facade: Stone cleaner S



Driveway



ILKA stone cleaner is a gentle cleaning agent preserving the natural colour of the brick.

Facade corroded after use of a competitor product. The beauty of bricks got lost.

ILKA – Siloxan

Special impregnator against damage caused by weathering

ILKA Siloxan is an excellent protection against moisture penetration, especially driving rain, water marks, efflorescence, fungal infestation, moss, and frost damage. Protects all kinds of plaster, concrete and mortar, brick and earthenware, natural and artificial stone, asbestos and asbestos cement, plaster, insulants, etc. against soiling by water-proofing.

Should not be used on glazed or polished stone! **Insoluble, weatherproof, colourless, frost- and UV-resistant after application.**

Use:

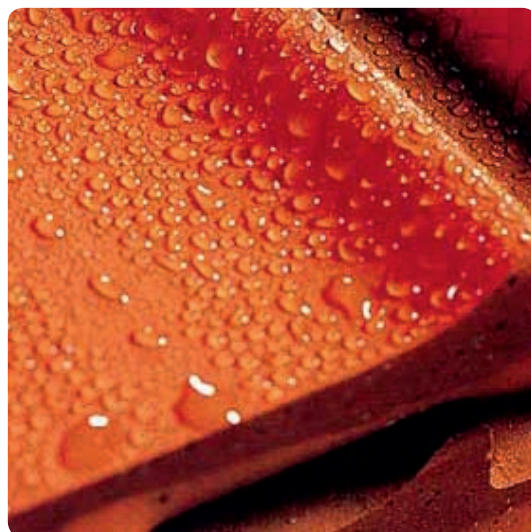
The surface should be dry, clean, and absorptive before treatment. Concrete or mortar should be treated not earlier than 3 to 4 weeks after curing. After impregnation the treated surface should be protected against rain for one day. Before use on brickwork or acid-resistant stone facades, first remove dirt with ILKA stone cleaner S, and cement residue with ILKA

ILKA Siloxan should not be used at temperatures below + 5° C. ILKA Siloxan is ready to use and can be applied to dry, absorptive building material in one or several work steps, ensuring that impregnation is saturated and uniform. For large surfaces it is recommended to flush with impregnator using the spray coat method. Moreover it is possible to use painting or immersion as impregnation techniques for various building materials. It is recommended to perform a test patch impregnation area to determine the actual impregnation requirements and the effect of the product. When used indoors make sure that the area is well ventilated. Consumption depends on the absorptive capacity of the material and ranges from 0.1 to 1.0 litres/m².

**Excellent alkali-resistance:
up to pH 14**



Technical College Köthen, Germany



Weathering protection

ILKA – Top Glanz

Floor coating for indoor use. Hard-wearing, anti-skid and non-slip self-shining treatment for PVC, natural and artificial stone, linoleum, unglazed brick, cork, sealed parquet and industrial flooring. Extremely durable, with high shine and long-lasting protection against dirt. Hard wearing protection against rubber marks, scrapes or scuffs from shoe heels. Suitable for treatment with high-speed machines. Preserves the water vapour permeability of the floor covering.

ILKA - Strukturfix

Special agent for enhancing the colour and texture, impregnating and soil-resisting

Properties:

ILKA Strukturfix can be used for colour deepening, water-repellent impregnation of all kinds of mineral construction materials. It's ideal both **for hydrophobising impregnation and protection against efflorescence, fungal infestation and moss.** ILKA Strukturfix is non-adhesive, lime-resistant, well penetrating, water-repellent, and water vapour permeable.

ILKA - Antigraffiti - Emulsion

Special protection against graffiti

Properties:

ILKA antigraffiti emulsion is a solvent-free protection against graffiti on walls, forming a tough and absolutely transparent layer without changing the colour of the undercoating.

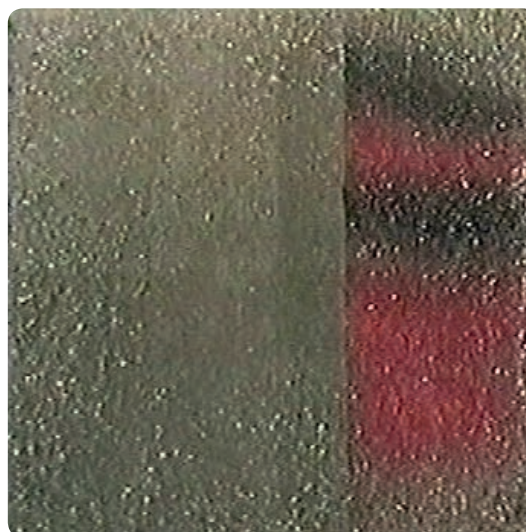
ILKA antigraffiti emulsion is both **water-repellent and water vapour diffusable and UV-resistant as well.** To remove the graffiti, the sacrificial layer is removed with hot water and high pressure.



Terracotta



Outdoor staircase



Left: after treatment

ILKA - Rapid – Bio II

For indoor use Ventilate well!

ILKA - Rapid – Bio III

For outdoor use

Paint strippers for facades, free from chlorinated hydrocarbons, environmentally acceptable and biodegradable.

Application range:

These advanced paint strippers provide excellent penetration and remove **new and old varnish, layers of paint such as dispersion/emulsion paint, synthetic resin plaster, latex, acrylates, and oil paint** from plaster, facades, natural stone, brick and concrete. Rapid Bio products are paint and varnish strippers which due to their excellent activity **remove several layers of paint in one application.**

Properties:

ILKA Rapid Bio are high-viscosity products and therefore have an excellent strength to adhere to vertical surfaces. ILKA Rapid Bio paint strippers ensure reliable, deep-pore removal of paint and varnish from any solvent-resistant undercoating. They are **free of chlorinated hydrocarbon (methylene chloride)** and therefore slow-acting compared to conventional products, but are highly efficient and effective. The contact time depends on the nature of the paint to be removed, and should be determined on a test panel. For detailed instructions refer to the technical product information sheets.

Suitable for use with airless spraying equipment



Before treatment



After treatment



Paint removal

Rapid Bio II and III



Camouflage paint from World War II



Removal with high pressure



Façade after paint removal



„St. Markus Church“



Total view

ILKA – RAPID

Remover for adhesive tape, synthetic resin, facade paint and graffiti, suitable for car paint as well!

Application range:

ILKA Rapid is a **biodegradable remover for dispersion paint, adhesive tape, synthetic resin plaster and graffiti**. ILKA Rapid is harmless to metals, glass, wood, stone, and anodised coatings. Suitability for varnish, rubber and plastics should be tested. Also suitable for car paint (nevertheless testing in an inconspicuously located area recommendable). ILKA Rapid is appropriate to remove adhesive tape, adhesive agent, fabric tape, synthetic resin, facade paint, graffiti, impregnator, emulsion paint, boat paint scumble, siloxane, liquid wallpaper, liquid foil (after curing), instant filler, ready-to-use fillers, roll-on plaster.

Contact time:

The contact time depends on the consistency of the material to be treated and should be determined on a test patch.

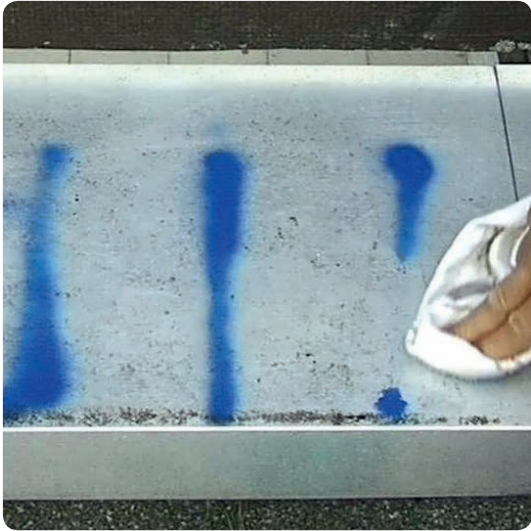
Use:

Dispersion paint removal:

Divide the facade to be treated into sub-areas. Apply ILKA Rapid preferably with a natural hair brush or ceiling brush. After appropriate contact time, solubilised paint can be removed from smooth surfaces with a scraper. Paint residues can be removed with water using a natural hair brush. High-pressure wash is recommended for rough surfaces. It is recommended to use only brushes made from natural hair. Each single sub-area should be treated from bottom to top. When several paint layers are present, it may be necessary to apply the product twice. Separate rinsed particles from the cleaning liquid using suitable fabric or filter. Any hardened paint has to be disposed off as construction waste. Local waste water regulations should be observed.

Adhesive tape and graffiti removal:

Either spray ILKA Rapid on the surface to be treated or apply with a cloth or natural hair brush. Wash off with water after 1 - 6 minutes using a cloth or natural hair brush. High-pressure or steam cleaners can be used for large area application.



Paint removal



Adhesive tape residue



Graffiti removal and simultaneous cleaning



Rapid removes effects caused by rain wash



Verarbeitungshinweise

Instructions for use

Klebebandentfernung

Adhesive tape removal

Hinweise zum Entfernen von Selbstklebebändern

Zum Erzielen von sauberen Farb- und Lackkanten sollte das Abdeckband direkt nach Antrocknen des Anstriches gleichmäßig von der Farbkante weg abgezogen werden. Sind Klebebänder z.B. aufgrund zu langer Verklebungszeit im Außenbereich nur schwer entfernbar, empfiehlt es sich, diese langsam und gleichmäßig abzuziehen; ggf. den Abzugswinkel zu variieren.

Hinweise zum Entfernen von Klebmasserückständen

Kommt es -z.B. durch Unkenntnis oder Verwechslung- zu einem nicht bestimmungsgemäßen Einsatz des Abdeckbandes, ist dieses häufig nicht mehr ohne Hilfsmittel zu entfernen. Werden so z.B. Produkte, die nur für die kurzfristige Außenanwendung konzipiert sind, längere Zeit Witterungs- und UV-Belastungen ausgesetzt, kann es beim Entfernen des Abdeckbandes sowie der Selbstklebmasse zu Problemen kommen. Trägerspalten, -reißen und Masserückstände sind dann die unerwünschte Folge. Wir raten zu folgendem, wie in den nachstehenden Tabellen aufgeführten, stufenweisen Vorgehen.

Die Lösungsmittel beziehungsweise Gemische können die Klebmasse lediglich aufquellen, nicht ablösen. Es empfiehlt sich daher gründliches Einweichen und anschließendes Abschieben der Klebmasse mittels Kunststoffspachtel. Klebmassereste werden mittels Lösungsmittel getränktem Lappen weggerieben. In jedem Fall empfehlen wir, um Beschädigungen des Untergrundes vorzubeugen, einen Versuch an verdeckter Stelle, da sich Lacke, Gummi und Kunststoffe in der Oberfläche verändern können. In Anbetracht der vielfältigen Anwendungsbedingungen sind die gegebenen Empfehlungen jedoch unverbindlich. Bitte sorgen Sie bei den Arbeiten für eine ausreichende Querbelüftung. Gegebenenfalls ist eine Atemschutzmaske mit A-Filter einzusetzen. Achten Sie besonders auf die entsprechenden Herstellerangaben und Gefahrenhinweise.

Klebebänder mit Naturkautschuk-Klebmassen z.B. tesa 4304, 4306, 4319, 4322

Träger lässt sich abziehen,
Selbstklebmasse noch weich

Entfernen der Klebmassereste mit Reinigungsbenzin

Träger spröde, reißt ein,
Selbstklebmasse
etwas erhärtet

1. mit Fön erwärmen und vorsichtig abziehen, Rückstände entfernen wie unter 1 beschrieben.
2. falls nicht möglich: Reinigungsbenzin mit Pinsel auftragen, mind. 1 Min. einwirken lassen und mittels Kunststoffspachtel vorsichtig abschieben

Selbstklebmasse
erhärtet

mit Universalverdünner wie unter 2. verfahren.

Selbstklebmasse
stark erhärtet

Führt auch das nicht zum Ziel, empfehlen wir wie unter 2.
das Verfahren mit "ILKA-Rapid Klebeband- und Kunstharzlöser"
- erhältlich bei ILKA-Chemie GmbH, Pfedelbach

If not successful, we recommend repeating the procedure described at step 2 by using "ILKA Rapid adhesive tape and synthetic resin remover", which can be obtained from ILKA-Chemie GmbH Pfedelbach.

Empfehlung
von Tesa
Recommendation
from TESA

Klebebänder mit z.B. tesa 4438, 4838, 4840

Träger spröde, reißt ein,
Selbstklebmasse
etwas erhärtet

mit Fön erwärmen und vorsichtig abziehen.

Evtl. verbleibende Masse-
rückstände nacheinander
mit Lösungsmitteln bzw.
Gemischen erproben

1. Reinigungsbenzin
2. Gemisch aus Äthylacetat + Xylol im Verhältnis 1:1
3. ILKA-Rapid Klebeband- und Kunstharzlöser
4. Gemisch aus Spiritus 40%, Reinigungsbenzin 40% und Aceton 20%

Ilka-Chemie (Tel: 07141 / 990651)

www.ilka-chemie.com

www.ilka-chemie.com

Association of Painters, Varnishers and Plasterers

Maler-, Lackierer- und Stukkateur-Innung

Main-Tauber-Kreis



Maler-, Lackierer- u. Stukkateur-Innung - Postfach 1250 - 97932 Tauberbischofsheim

Recommendation to all members and colleagues

EMPFEHLUNG

für alle Innungs- und Berufskollegen

97941 Tauberbischofsheim
Haus des Handwerks
Pestalozziallee 11
Telefon 093 41 / 92 51-0
Telefax 093 41 / 92 51-50
eMail: khmtk@hwk-heilbronn.de

16.07.01

ILKA Rapid,

ein besonderes Produkt + Problemlöser, getestet und für sehr empfehlenswert empfunden!

ILKA Rapid,

Klebebänderreste

Metallen (Alu,

Probleme die uns allen sehr bekannt sind!

is a very special product and problem solver, which has been tested and found highly recommendable.

ILKA Rapid ist ein universelles und überall einsetzbares Reinigungs- und Lösemittel.

Anwendung: Entfernen von alten Klebebänderresten auf Metall, Kunststoff oder Lackoberflächen!

ILKA Rapid mit einem Lappen auftragen, kurz einwirken lassen, dann mit einem sauberen und trockenen Lappen abreiben oder mit Wasser nachspülen.

Anwendung: Entfernen von alter Dispersionsfarbe an Türen und an Naturholz!

ILKA Rapid mit einem Pinsel auftragen, einwirken lassen, mit einem sauberen und trockenen Lappen aus den Poren reiben. Wenn notwendig mehrmals wiederholen.

ILKA Rapid ist hautunschädlich, säurefrei, frostbeständig und feuergefährlich, greift keine Metalle, Eloxierte Teile, Autolack, Glas, Holz und Steine an. In geschlossenen Räumen sollte immer für gute Durchlüftung gesorgt werden.

Achtung:

- 1.) Bei Gummi und Kunststoffuntergründen, sofort mit Wasser und Schwamm nachwaschen.
- 2.) Immer ein Versuchsfeld anlegen.

ILKA Produkte sind über:

ILKA-Chemie Gottlieb – Daimler – Str. 1 in 71732 Tamm oder deren Fachvertreter zu beziehen. Tel. 07141/990651 - 53



OM - PETER BECKERT

ILKA - Mould Killer

Stops mould and algae

Properties:

Mould killer **acts immediately and visibly**. Cleans mouldy walls, seams between tiles, permanently elastic seams with a disinfectant effect.

Use:

Important! Do not remove mould before application! Spray the entire surface from a distance of 4 to 6 cm until wetted. For heavy infestations, repeat spray application after approx. 15 minutes. Wash permanently elastic seams approx. 10 minutes after application with large amounts of water. Repeat application if necessary. On seals between tiles allow product to act for 10 minutes, then sponge the residues. Repeat application if necessary.

Mould killer removes **even deeply embedded tanning agents** as shown in the picture. Concrete plates in a park were heavily affected by rain water that dripped from benches. Where even good-quality stone cleaners failed, ILKA mould killer made the surface perfectly clean.

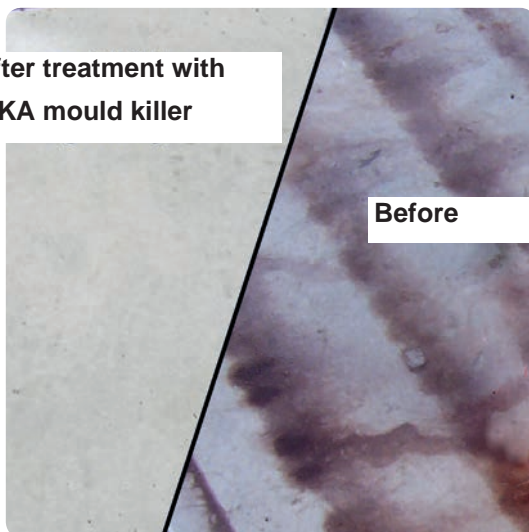


Cellar room



Shower cubicle

After treatment with
ILKA mould killer



Concrete

Various Applications



ILKA – Industriefix

Water-soluble industrial cleaner with fast depth effect

Application range:

This highly efficient cleaning concentrate removes fat, grease, oil, wax, coal, soot, ink and other tenacious stains in industrial environments.

ILKA Industriefix can be used for example as machine cleaner, thorough basic cleaner, routine cleaner, tarpaulin, awning and cover cleaner, plastic cleaner.

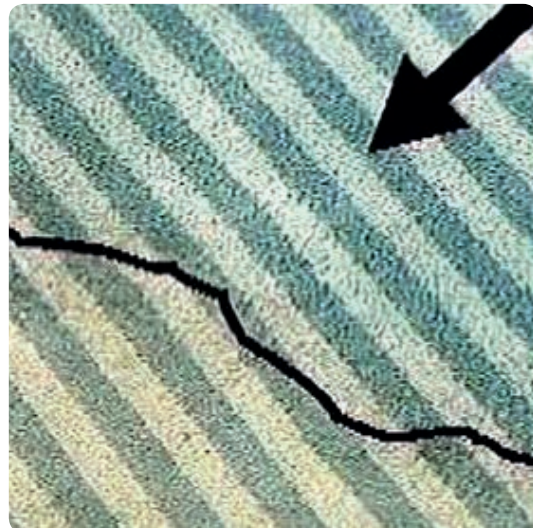


Oily iron girder

ILKA TR 79 concentrate

Water-soluble very mild degreasing agent with outstandingly fast depth effect

Biodegradable. No unpleasant odour, non-corrosive. Removes grease residue from bathtubs, sweat residue from wood in saunas. Suitable for all wipeable objects in hotels, residential homes, hospitals. Cleans wall-to-wall carpets leaving no residues. Approved by the German Carpet Research Institute. Suitable for caravans, buses, lorries and all kinds of motor vehicles, inside and outside, for awnings, superstructures and car ceiling.



Carpet

ILKA glass cleaner

Glass cleaner concentrate with organic fat solvent and lemon-fresh scent. Leaves no streaks! ILKA glass cleaner is suitable for all glass surfaces. Compliant with § 9 of the German Detergent and Cleaning Agent Act. Biodegradable.



Glass front



Bottles and jerry cans



Drums



Drum draining pump



Drum mount proportioner



Pump sprayer 1.5 litres



Draining tap

The information contained in this booklet cannot replace personal advice. Please contact us if you have a tough nut to crack. Our representatives shall be glad to help you find the suitable product to solve your application problem.

When you need advice outside Germany, please visit our website.



Cleaning, Protection, Care, Maintenance of Value from ILKA®-Chemie

ILKA®-Chemie



Please visit us online at

www.ilka-chemie.com